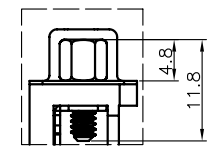
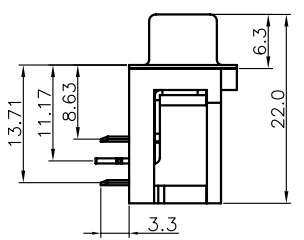
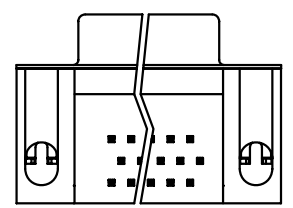
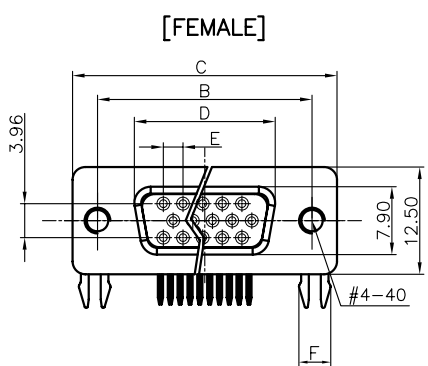
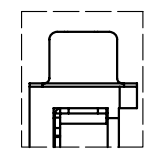


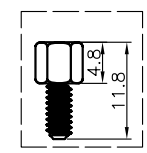
REV.	DESCRIPTION	DRAWN	CHECKED	APPROVED



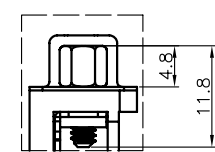
WITH SCREW TYPE



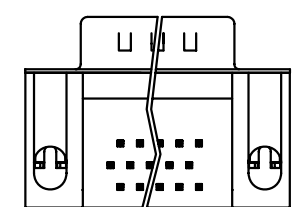
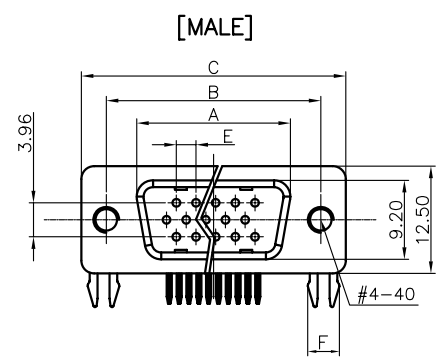
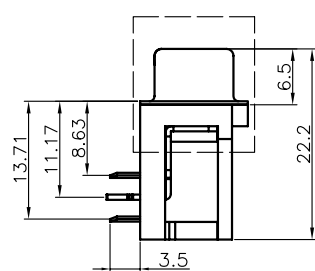
WITH RIVET TYPE



SCREWS



RIVET TYPE WITH FIXED SCREWS

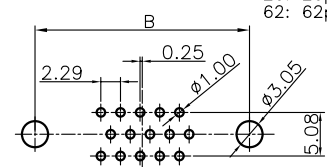


NOTES:

- PRODUCTS PERFORMANCE:
 - VOLTAGE RATING: 250V AC.
 - CONTACT CURRENT RATING: 1.5A MAX. PER PIN.
 - CONTACT RESISTANCE: 20mΩ MAX.
 - DIELECTRIC WITHSTANDING VOLTAGE: 500V AC(rms) FOR 1 MINUTE.
 - INSULATION RESISTANCE: 1000MΩ MIN.
 - OPERATING TEMPERATURE: -20°C~+70°C.
- PRODUCT NUMBER CODE:

DS1038 - X X X X X X X

- BOARD LOCK DIM. F
 - 4: 4.00mm
 - 7: 3.70mm
- SCREW TYPE
 - A: WITH SCREW TYPE
 - B: WITH RIVET TYPE
 - C: RIVET TYPE WITH FIXED SCREWS
 - D: RIVET TYPE WITH SCREWS IN BULK PACKAGE
- CONTACT PLATING
 - Si: SELECTIVE GOLD FLASH
 - 8: FULL GOLD FLASH
- SHELL PLATING
 - N: Nickel
 - T: Tin
- COLOR OF HOUSING
 - B: BLACK
 - U: BLUE
 - C: BLUE(PC99)
- CONNECTOR TYPE
 - M: MALE
 - F: FEMALE
- No. OF CONTACTS
 - 15: 15pos.
 - 44: 44pos.
 - 26: 26pos.
 - 62: 62pos.



RECOMMEND PCB LAYOUT(TOLERANCE ±0.05)
(VIEW FROM TOP SIDE)

Dimension					
Position	A±0.2	B±0.2	C±0.3	D	E
15	17.90	24.99	30.84	16.33	2.29
26	26.50	33.32	39.14	24.66	2.29
44	40.00	47.04	53.04	38.38	2.29
62	56.50	63.50	69.32	54.84	2.14

GENERAL TOLERANCE		ANGLE TOLERANCE	
X.	±0.60	X.	±5°
.X	±0.38	.X	±3°
.XX	±0.25	.XX	±2°
DRAWING TYPE		CUSTOMER	
SCALE	1:1	SHEET	1 OF 1
DRAWING NO.	C-DS1038-XXXXXXX		

PROJECTION	TITLE	D-SUB H.D RIGHT ANGLE TYPE	
UNITS	mm	SERIES	DS1038 SERIES
SHEET SIZE	A4	DHR-15FB, DHR-15MB, DHR-26FA, DHR-26FB, DHR-26MA, DHR-26MB, DHR-44FA, DHR-44MA	