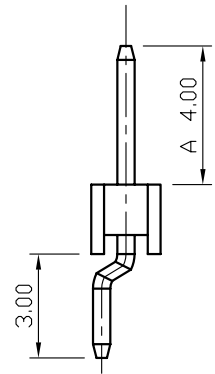
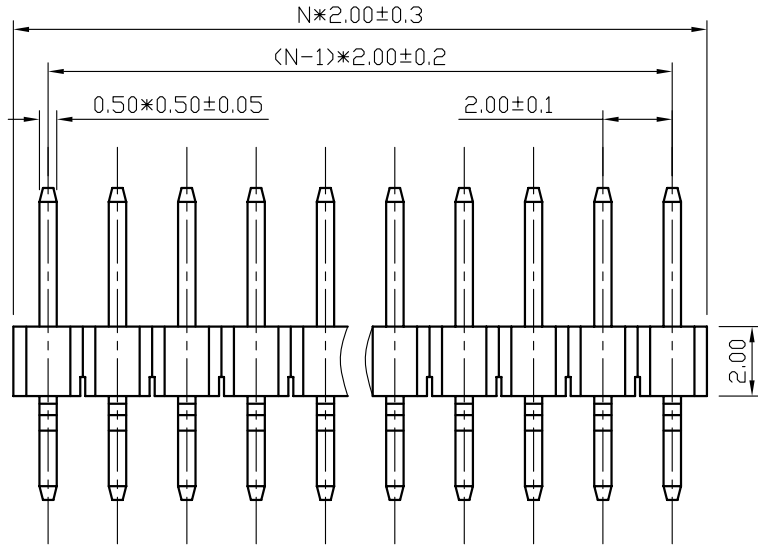
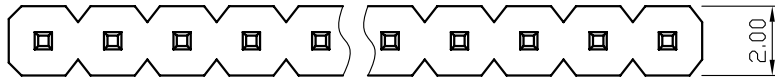


REV.	DESCRIPTION	DRAWN	CHECKED	APPROVED
A	NEW RELEASE	LJH 05/17/05'		



NOTES:

- MATERIAL&FINISHES
 - INSULATOR:THERMOPLASTIC(UL 94V-0).
 - CONTACT MATERIAL: COPPER ALLOY.
- SPECIFICATION
 - CURRENT RATING:1.5 Amp.
 - INSULATION RESISTANCE:1000MΩ Min.
 - DIELECTRIC WITHSTANDING:600VAC.
 - CONTACT RESISTANCE:20mΩ Max.
 - OPERATING TEMPERATURE:-20°C TO +80°C.
- PART NUMBER: DS1025-04
- PRODUCT NUMBER CODE:
DS1025-04 - X X X X X

CONTACTS TYPE
S:SMT TYPE
HOUSING COLOR
B:BLACK

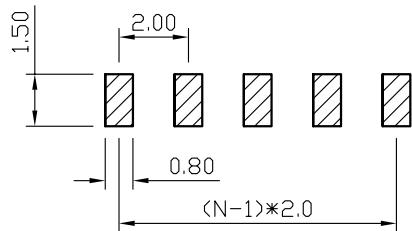
CONTACT PLATING
8:FULL GOLD FLASH

CONNECTOR TYPE
P:PLUG S:SOCKET

No.OF CONTACTS
1*2-1*X

SERIES No.
DS1025-04

A: CUSTOMER LENGTH AVAILABLE
N:NUMBER OF CONTACTS



RECOMMEND PCB LAYOUT(TOLERANCE=±0.05)

GENERAL TOLERANCE		ANGLE TOLERANCE		PROJECTION		TITLE	SINGLE ROW RIGHT ANGLE S.M.T	
X.	±0.60	X.	±5'	UNITS	mm			
.X	±0.38	.X	±3'	SHEET SIZE	A4	SERIES	DS1025-04 SERIES	
.XX	±0.25	.XX	±2'	PLS2 1x40ST (2.00) 1025-04				
DRAWING TYPE		CUSTOMER						
SCALE		1:1	SHEET		1 OF 1			
DRAWING NO.		C-DS1025-04-XXXXX						